

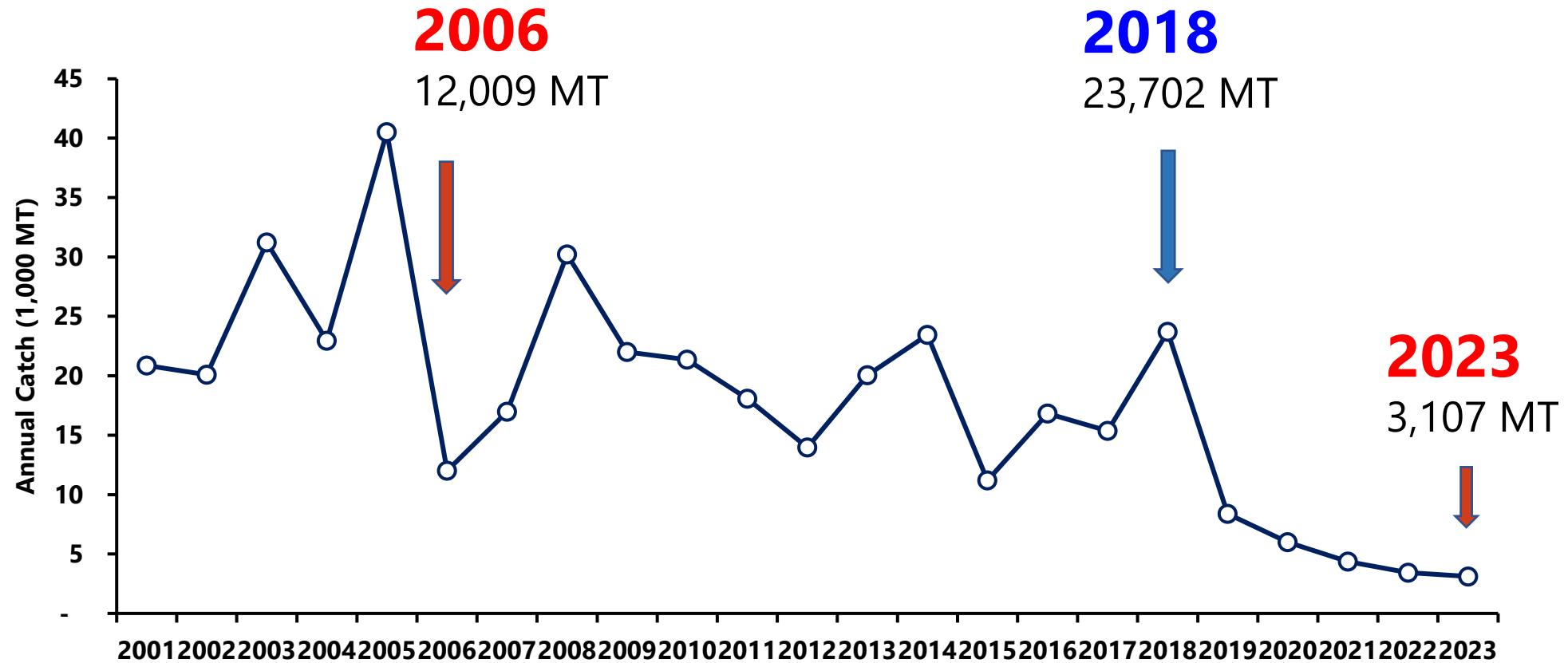
Korean Stick-held dip net (SHDN) Fishery Status up to 2023

Hyejin Song and Jeongseok Park

National Institute of Fisheries Science

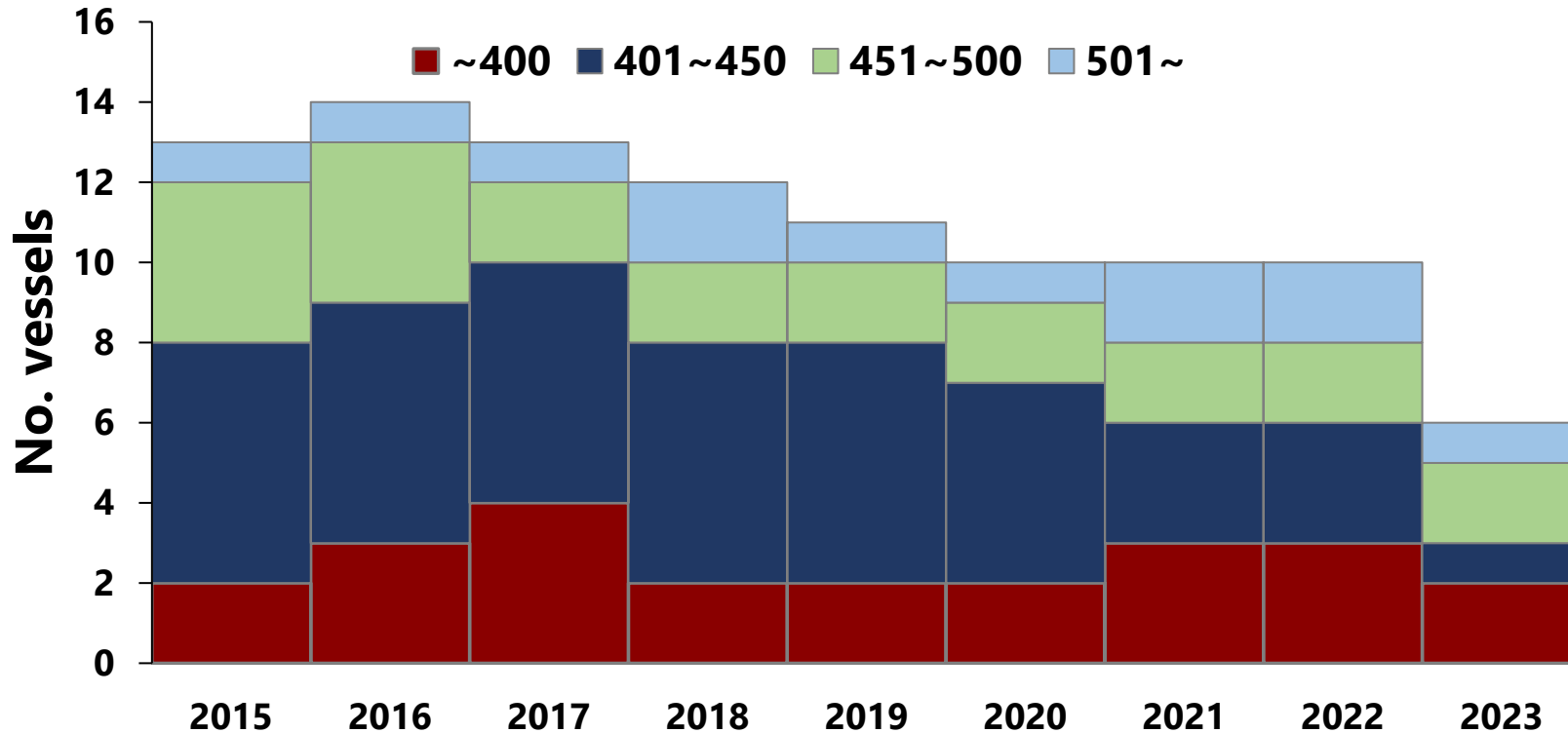
Republic of Korea

Pacific Saury Annual Catch



- Korean Exploratory Fishing in Northwest Pacific Ocean in 1960s
- The annual catch has continued to decrease since 2018
- **Total Catch in 2023 was 3,107 MT (Lowest ever)**

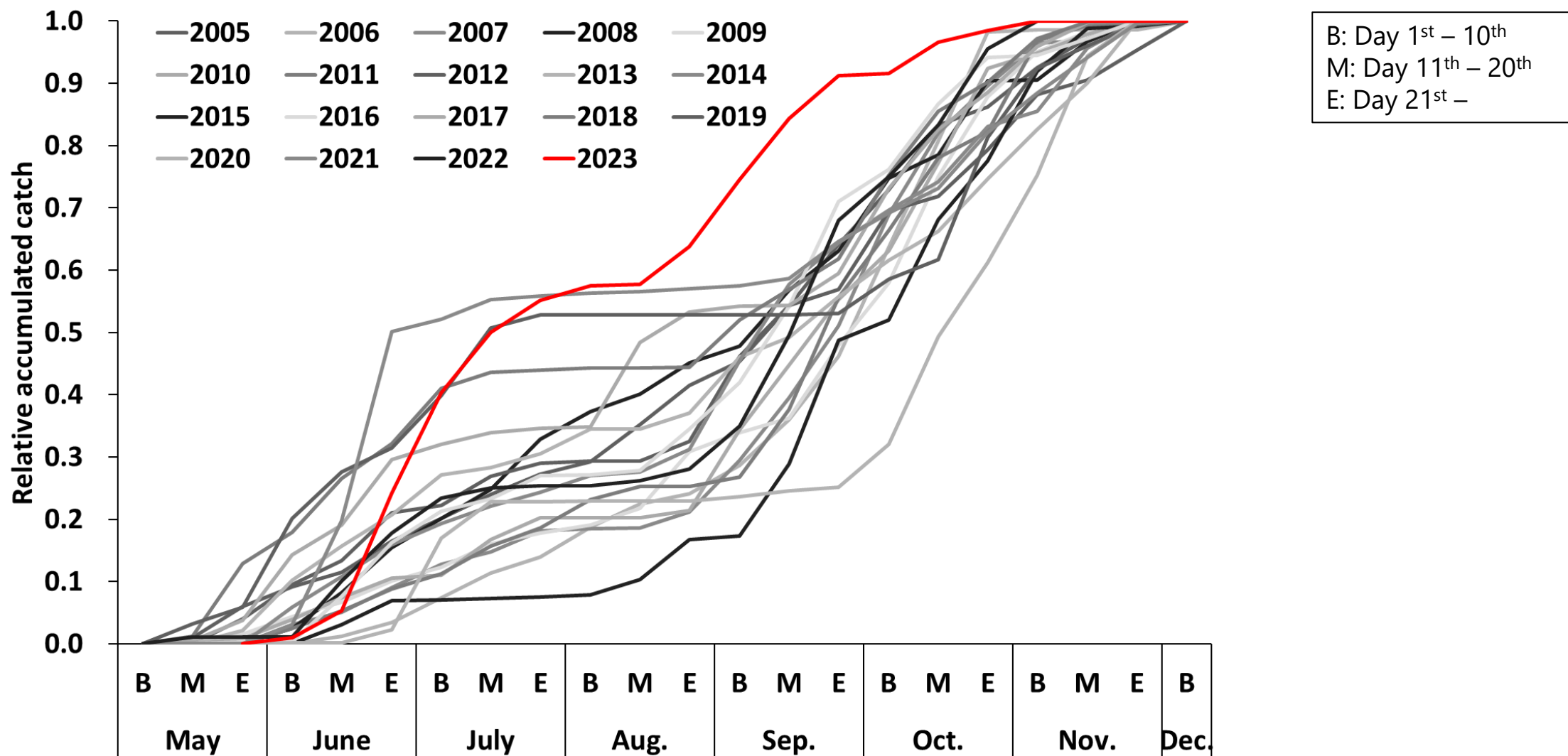
Number of Korean SHDN Vessels



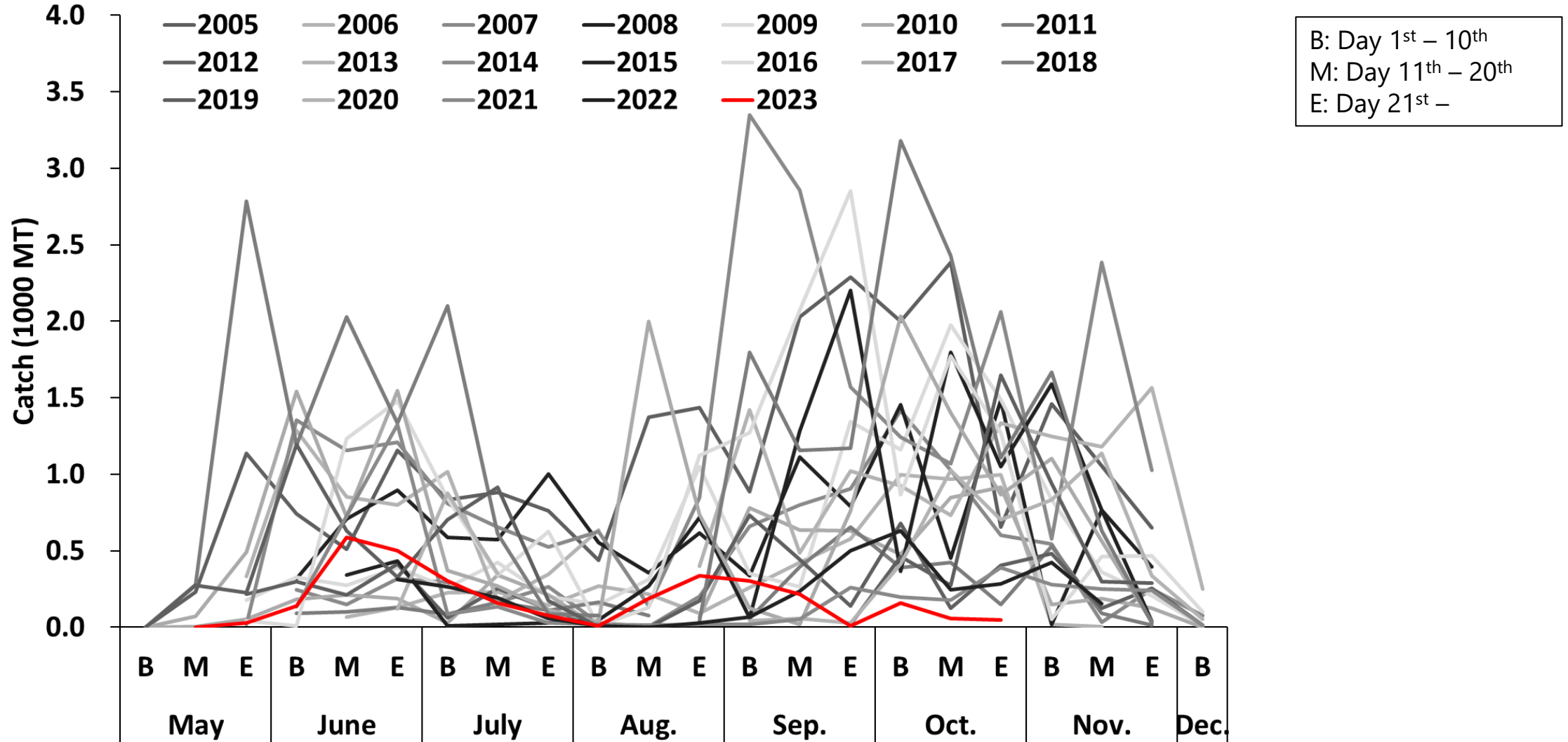
GRT	2021	2022	2023
~400	3	3	2(-1)
401~450	3	3	1(-2)
451~500	2	2	1(-1)
501~	2	2	1(-1)
Total	10	10	6(-4)

- The number of Korean SHDN Vessels has decreased gradually.
- In 2023, only **six fishing vessels** were in operation compared with 10 vessels in the previous two years due to the continued low catch level of PS.

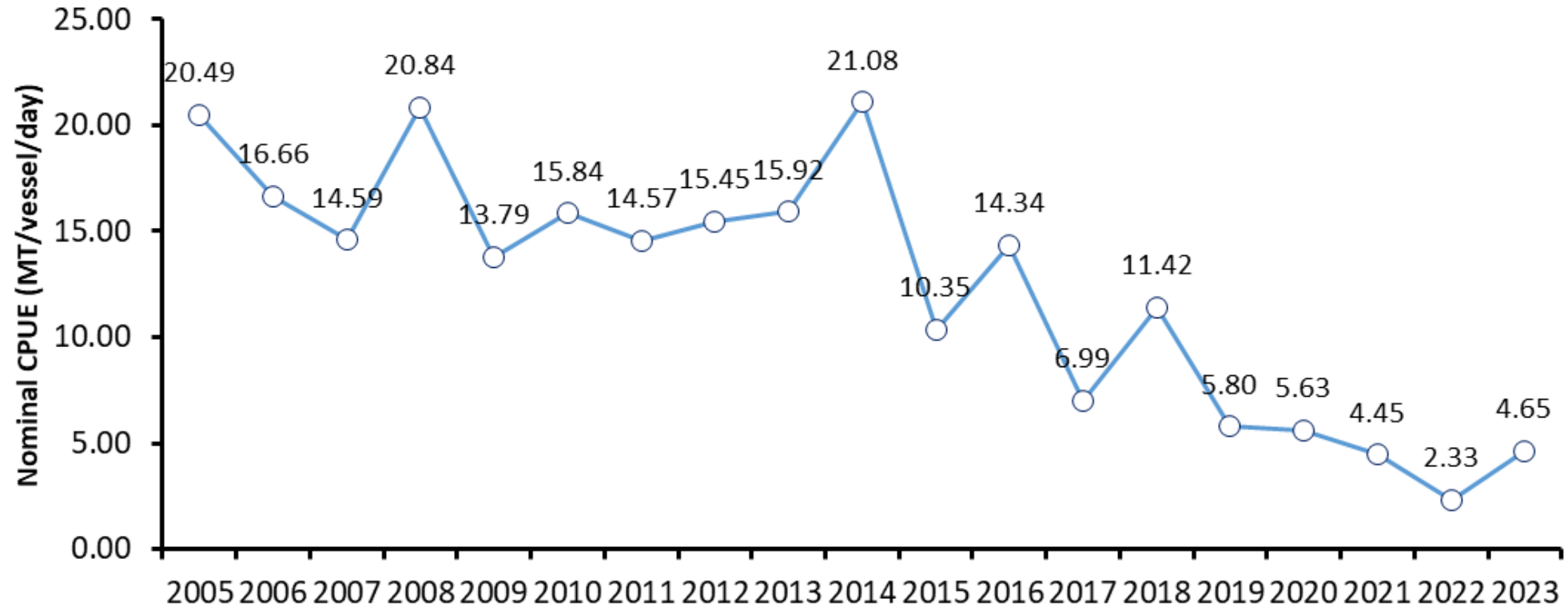
Relative Accumulated Catch



Seasonal Catch

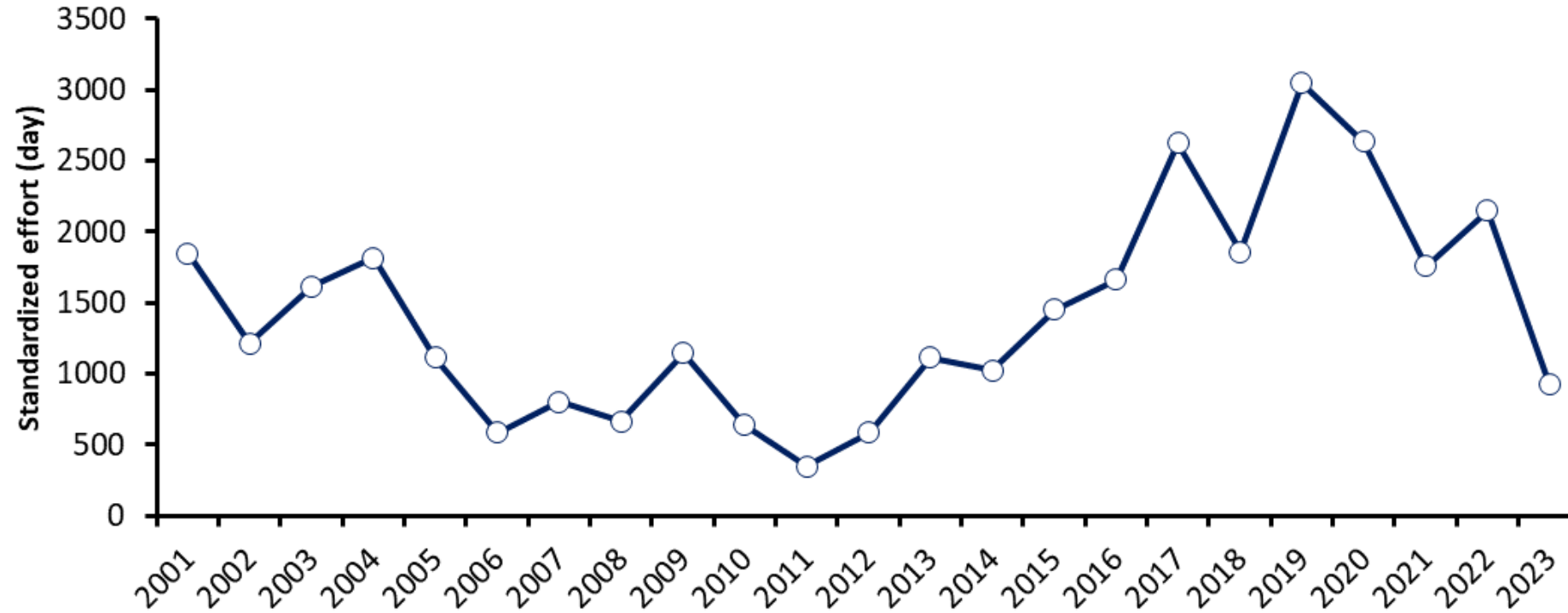


Nominal CPUE



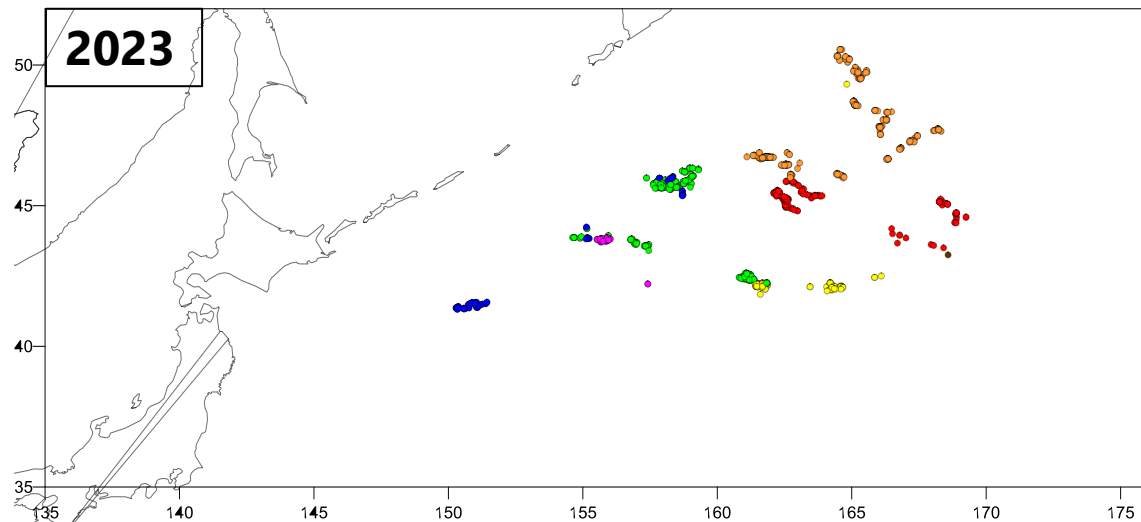
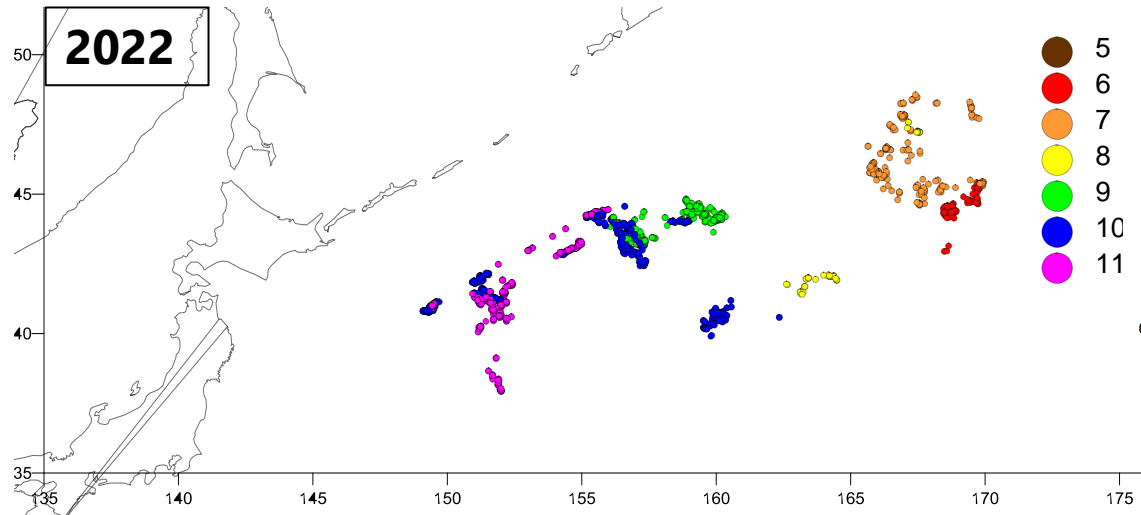
- The nominal CPUE was 4.65 in 2023, representing a double increase compared to the previous year

Standardized Effort(Catch/std CPUE)



- **The standardized effort was 928 in 2023, representing a double decrease compared to the previous year.**
 - **The number of fishing vessels decreased from 10 in 2022 to 6 in 2023.**

Fishing Grounds

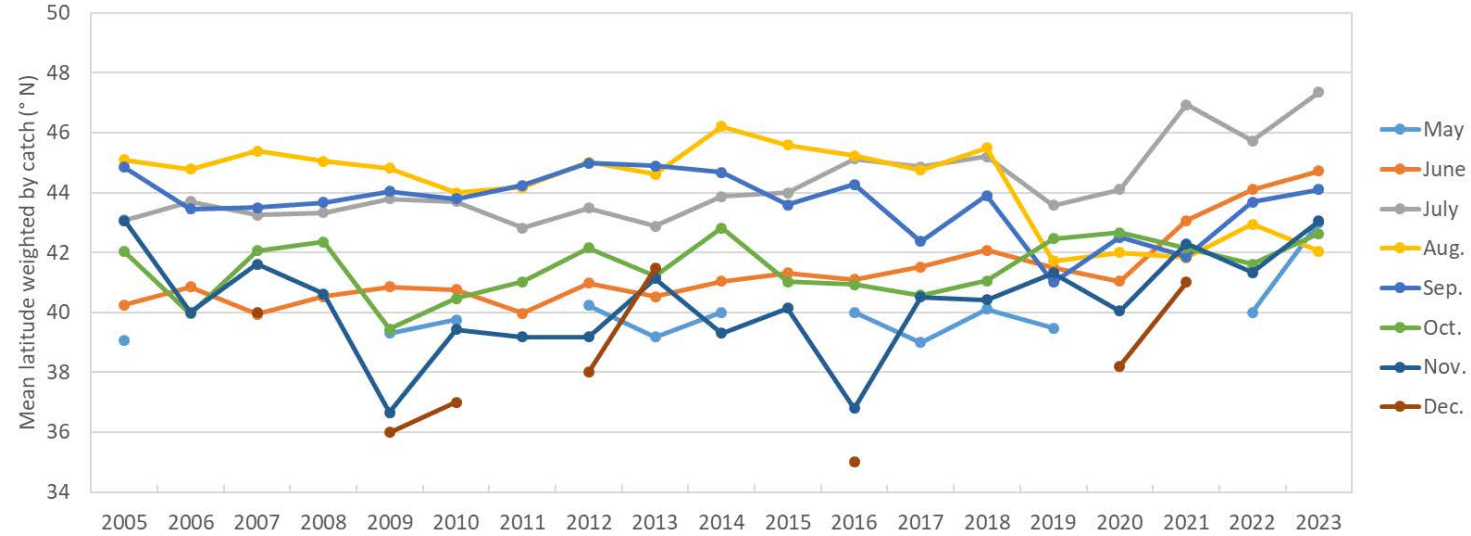


2022 & 2023yr

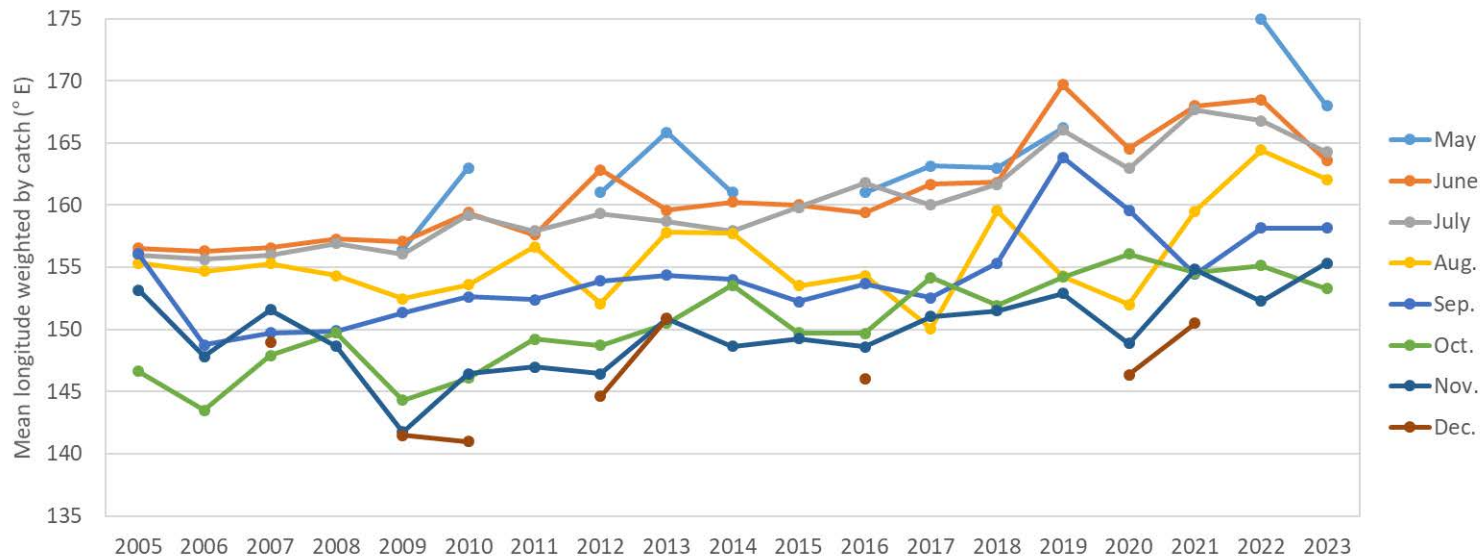
- The PS fishing seasons ran from May to November, with the fishing grounds situated east 150E(150~170E).
- In July 2023, the fishing moved northward.

Annual Change of Fishing Ground

Latitude



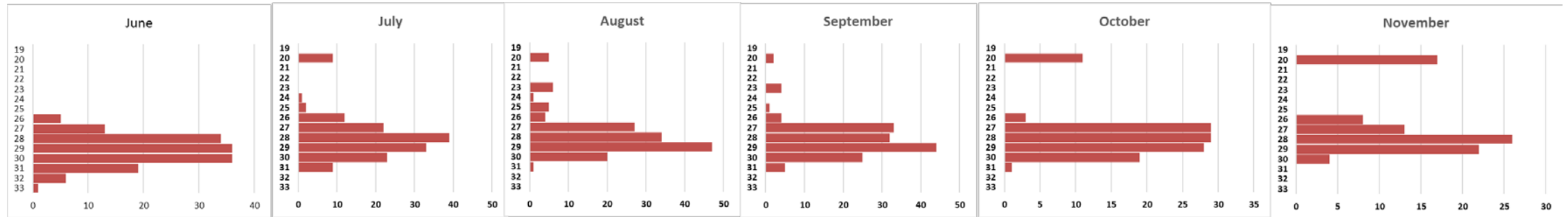
Longitude



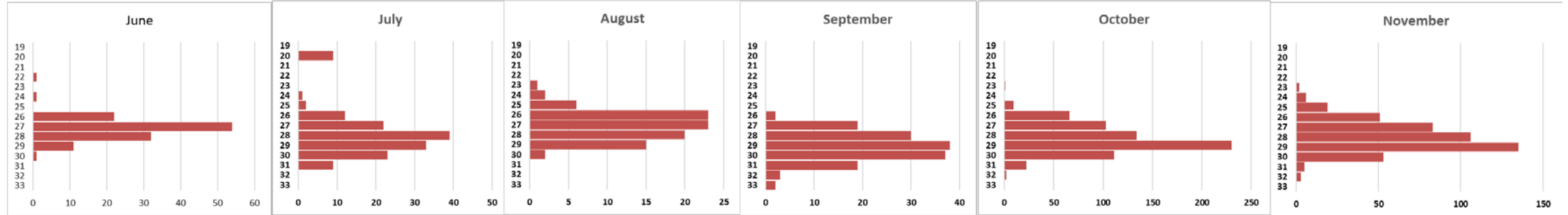
Seasonal Size Compositions

FL classes (1cm)

2023



2022

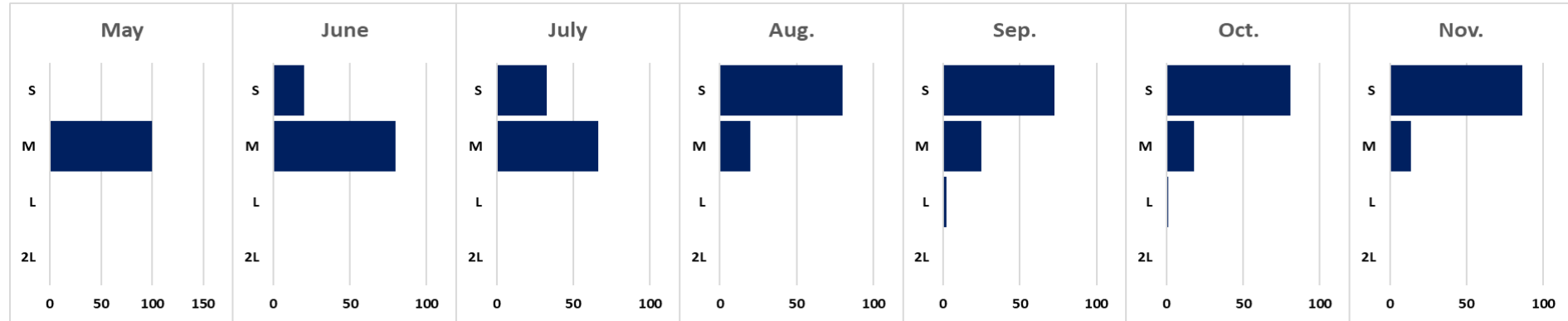


No. of individuals

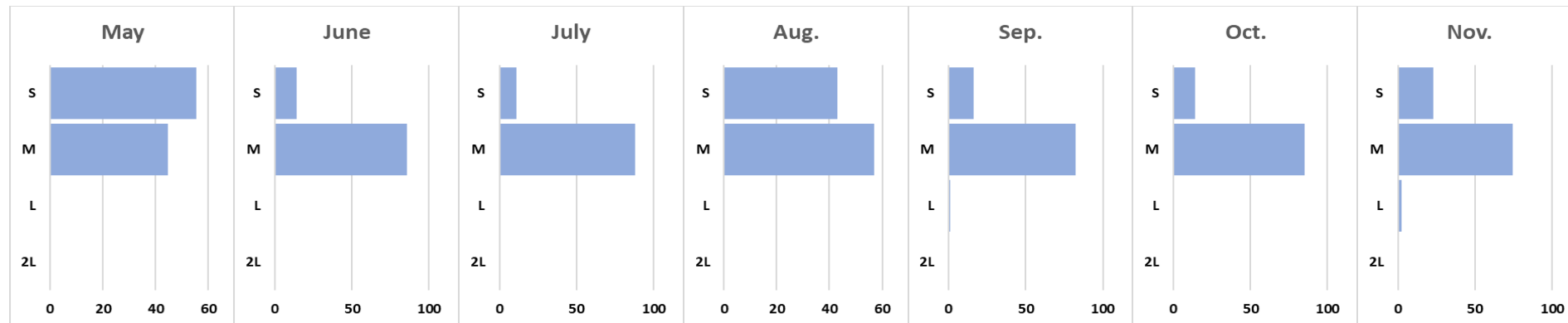
- In 2023, the BL range was 20-32 cm, with a mean value of 27.7 cm. It was lowest in November (26.4) and highest in June (28.9).
- In 2022, the BL range was 19-33 cm, with a mean value of 27.7 cm. It was lowest in July (26.8) and highest in September (28.9).
- There is no significant difference of size compositions between the two years.

Size Box Compositions

2023



2022

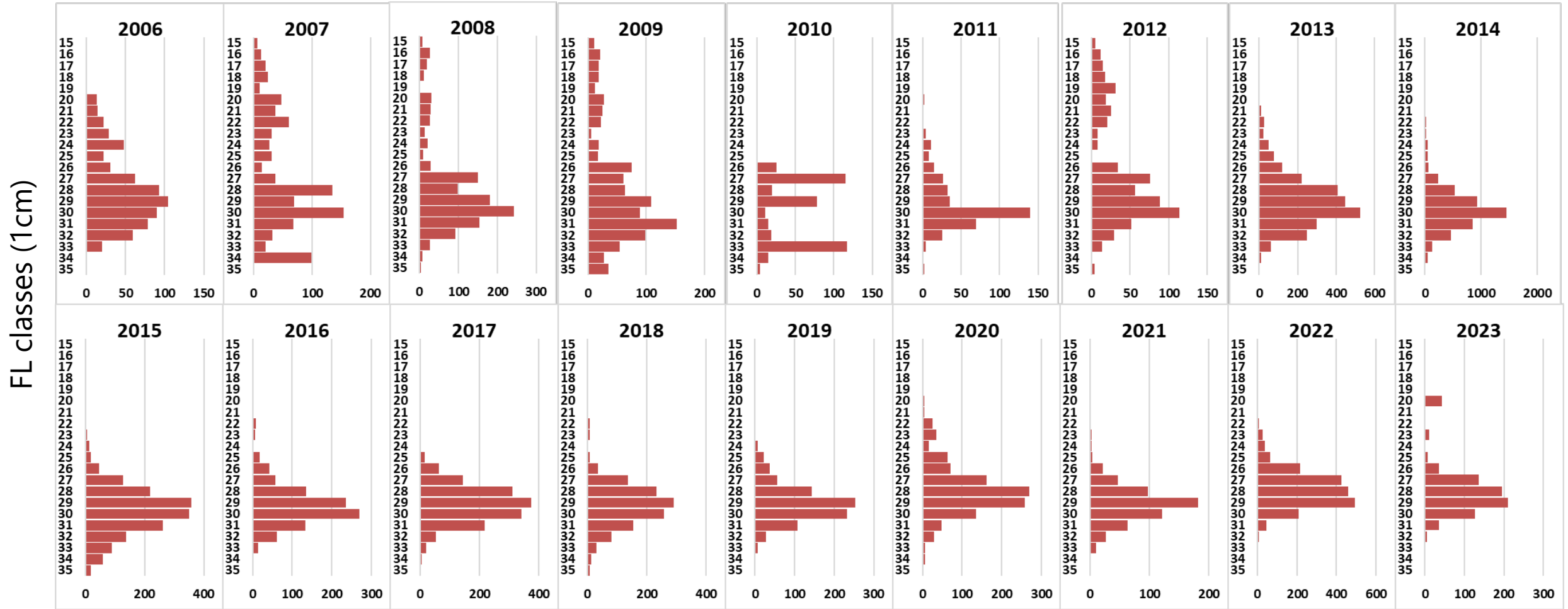


Size of box

Percentages (%)

- The ratio of S was dominant during fishing seasons, except from May to July in 2023.
- The size composition appears to be smaller in 2023 than in 2022.
- * S: 18–30cm; M: 23–33cm; L: 27–34cm; 2L: 29–34cm (fork length)

Annual Change of Body Length Compositions (All fishing season)



No. of individuals