



North Pacific Fisheries Commission

NPFC-2021-TWG CMSA04-WP15

Monthly catch data and the maps and description of China' fishing grounds

Heng Zhang¹, Chao Yang^{1,2}, Yongchuang Shi¹, Guoqing Zhao^{1,2}

¹Key and Open Laboratory of Oceanic Laboratory of Remote Sensing Information Technology in Fishing Resource, East China Sea Fisheries Research Institute, Chinese Academy of Fishery Science. Shanghai 200090, China

²College of Marine Sciences, Shanghai Ocean University, Shanghai 201306, China



1 Monthly catch in 2015-2020

Figures 1-6 showed the monthly catch (tons) of purse seine fleet in 2015-2020. In 2015-2019, main fishing seasons were during summer and autumn (May to October). However, in 2020 the monthly catch on chub mackerel maintained a relatively lower level from April to July.

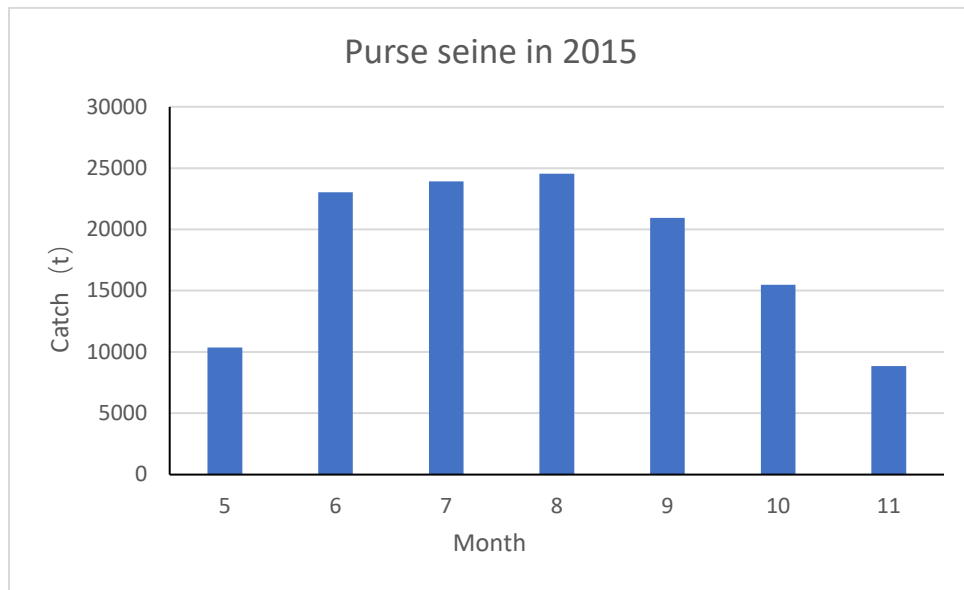


Figure 1 Monthly catch changes in 2015

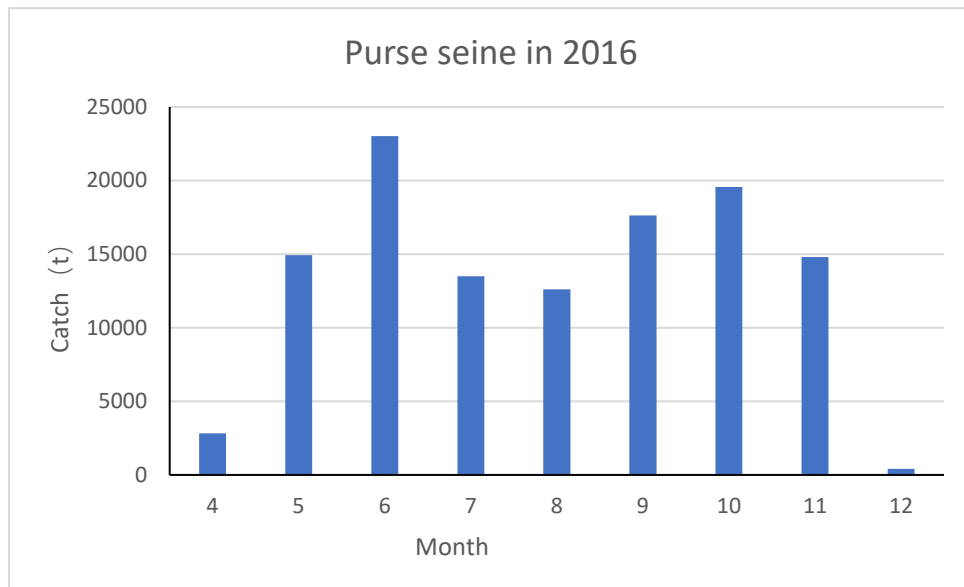


Figure 2 Monthly catch changes in 2016

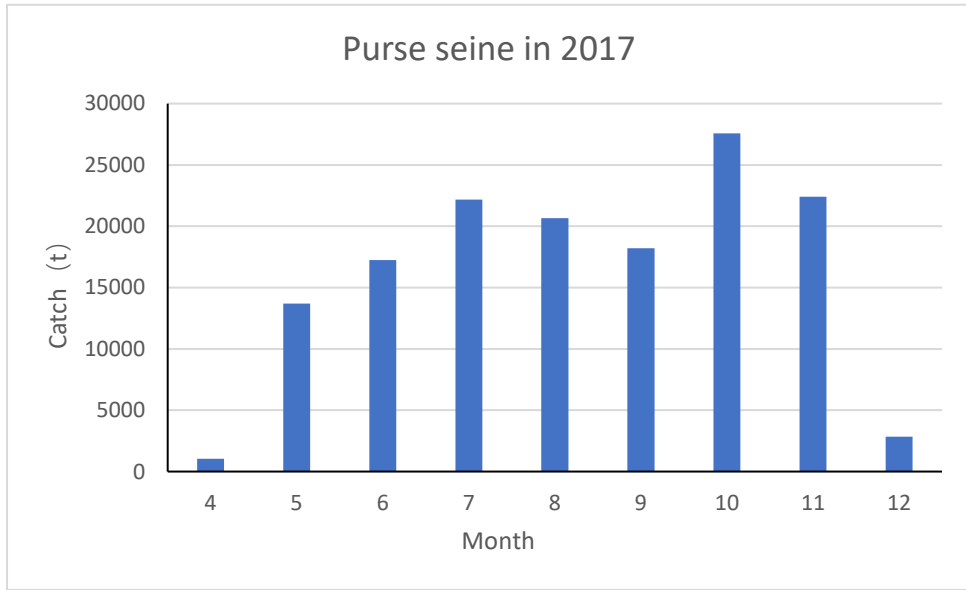


Figure 3 Monthly catch changes in 2017

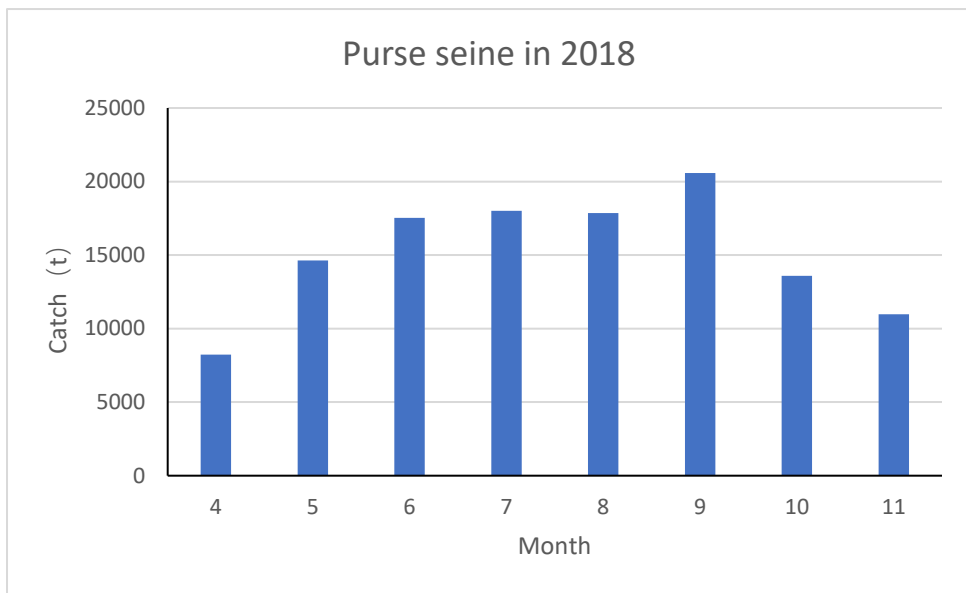


Figure 4 Monthly catch changes in 2018

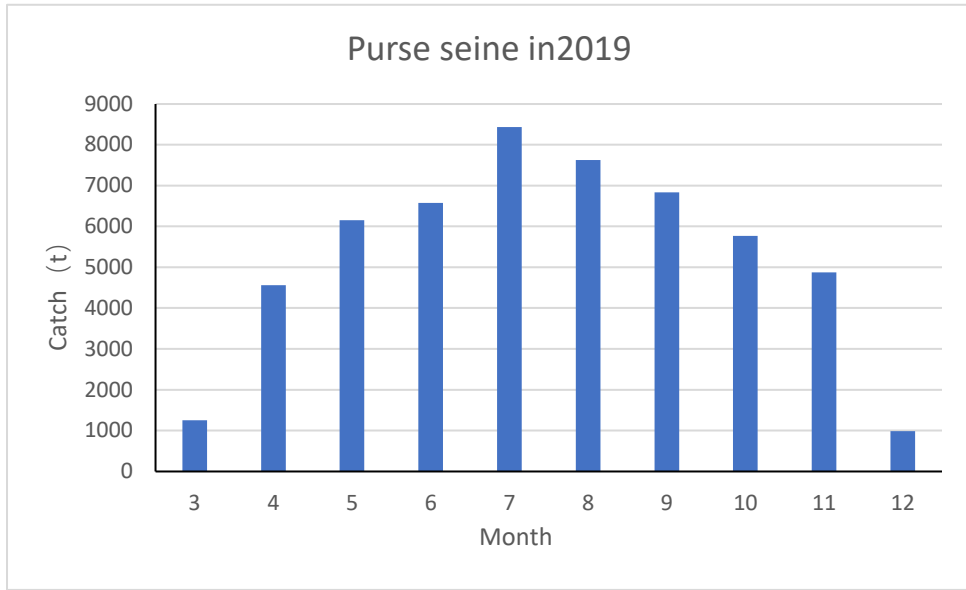


Figure 5 Monthly catch changes in 2019

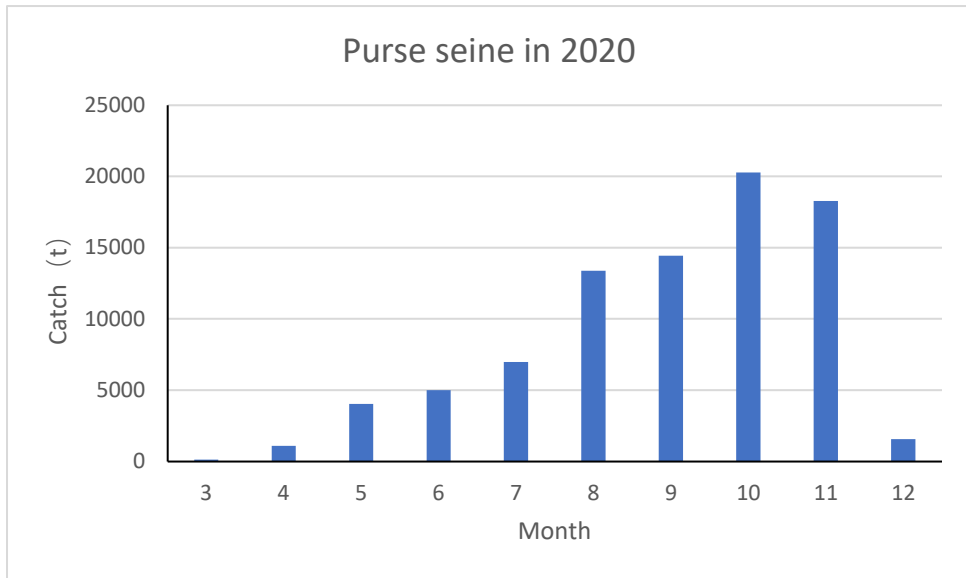


Figure 6 Monthly catch changes in 2020

2 Maps of chub mackerel in China' fishing ground in 2020

In Figure 7, it showed the spatial distribution of chub mackerel catch (tons) in the North Pacific in 2015-2017. In latitude, the total yield of 40-44 degrees north latitude was relatively higher than other areas. China fleet caught 92, 456 tons in 2020. The catch of chub mackerel in purse seine fleet distributed in the NPFC area in 2020.

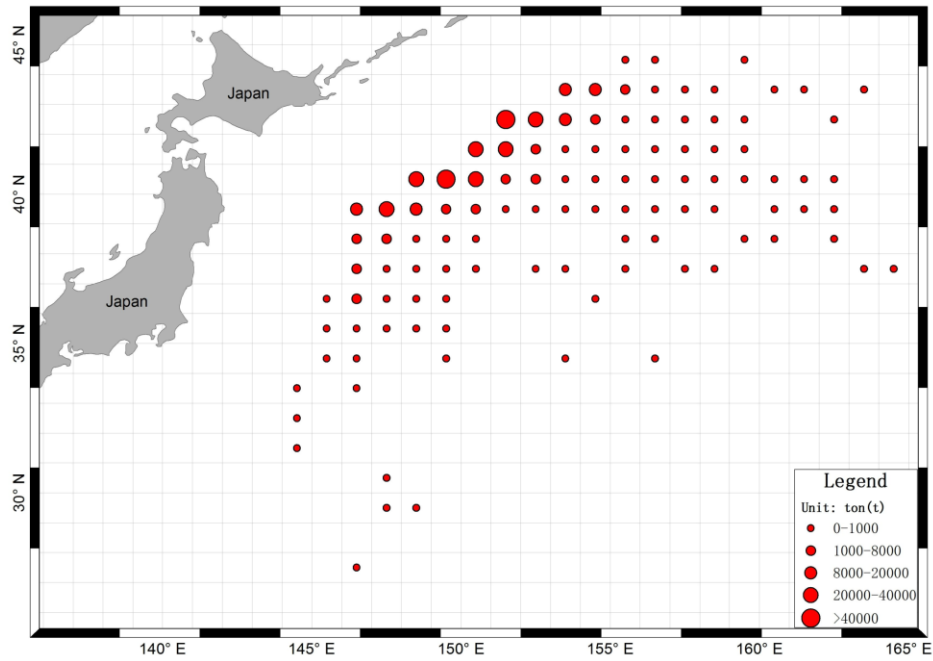


Figure 7 Distribution on the catch of chub mackerel in China in 2015-2019

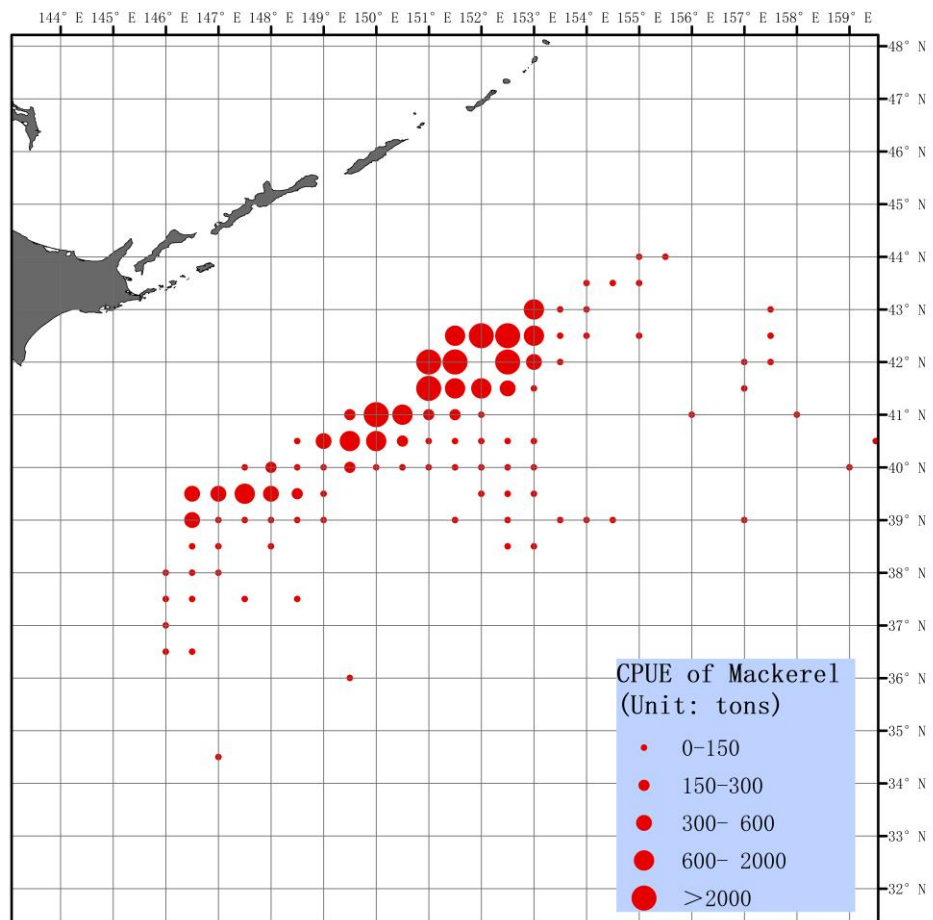


Figure 8 Distribution on the catch (tons per net) of chub mackerel in China in 2020